

MOLE OR MELANOMA?

Know your ABCDE's

Mole Features

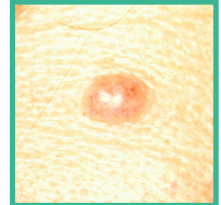
Melanoma

Normal mole

A

ASYMMETRY

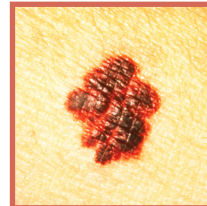
One half of the lesion does not match the other half.



B

BORDER

The edges of the lesion are ragged or notched.



C

COLOR

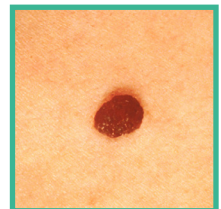
The color is not the same throughout the lesion.



D

DIAMETER

Melanomas are usually greater than 1/4 inch.



E

EVOLVING

The lesion has changed in size, shape, color, or texture.

